

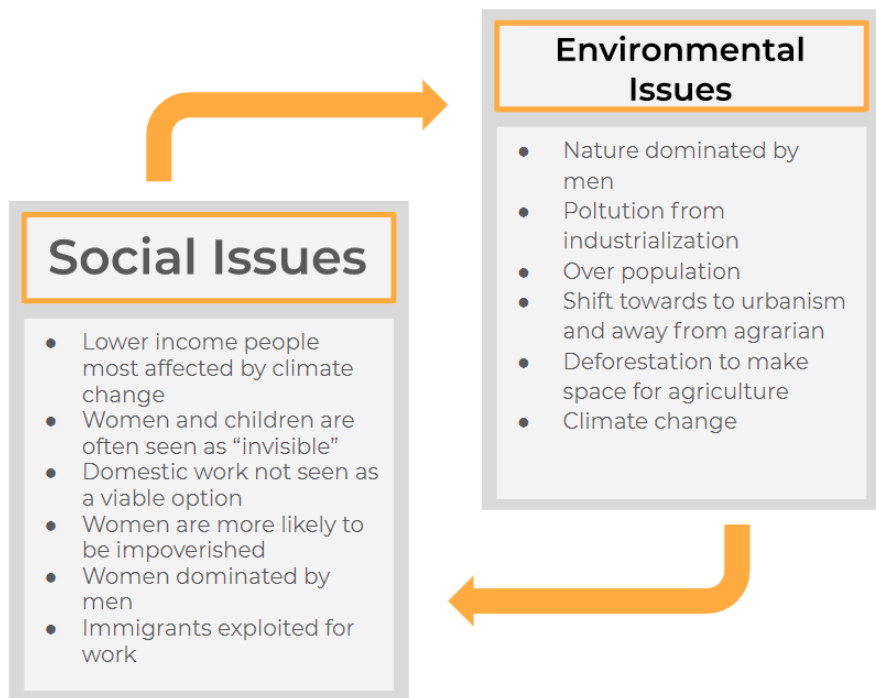
A)



Caption written by the student:

"This concept map shows how the basic ideas of ethics led to new ideas in philosophy. The chart starts with the idea of ethics as a whole and explains how deontology and teleology came about and then connects to the next panel that shows deontology and teleology when talking about anthropocentrism or non-anthropocentrism. The next panel is about Leopold's "Land Ethic," which is a non-anthropocentric view of nature, which is followed by Feinberg's interest principle which address whether or not animals, plants, fetuses, etc. should have the same rights as humans."

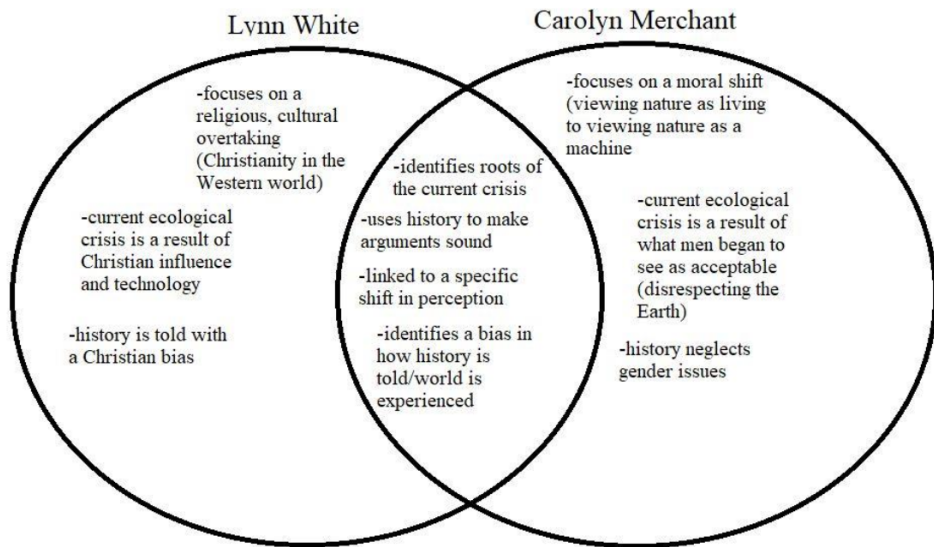
B)



**Caption written by the student:**

“This concept map is a visual which shows the cyclical relationship between environmental issues and social issues. This relationship is also known as eco-feminism. Eco-feminism is the theory which draws parallels between the domination of nature and the domination of oppressed peoples, specifically women. The negative changes to the environment impact minorities the most, as they are the ones most likely to be living in poverty. Capitalism is a force controlled mostly by men, and capitalism is the biggest oppressor of women and the environment. The social issues and environmental issues both have to be fixed simultaneously or else the problems will just continue to feed one another. The relationship between women to nature is a connection to male domination.”

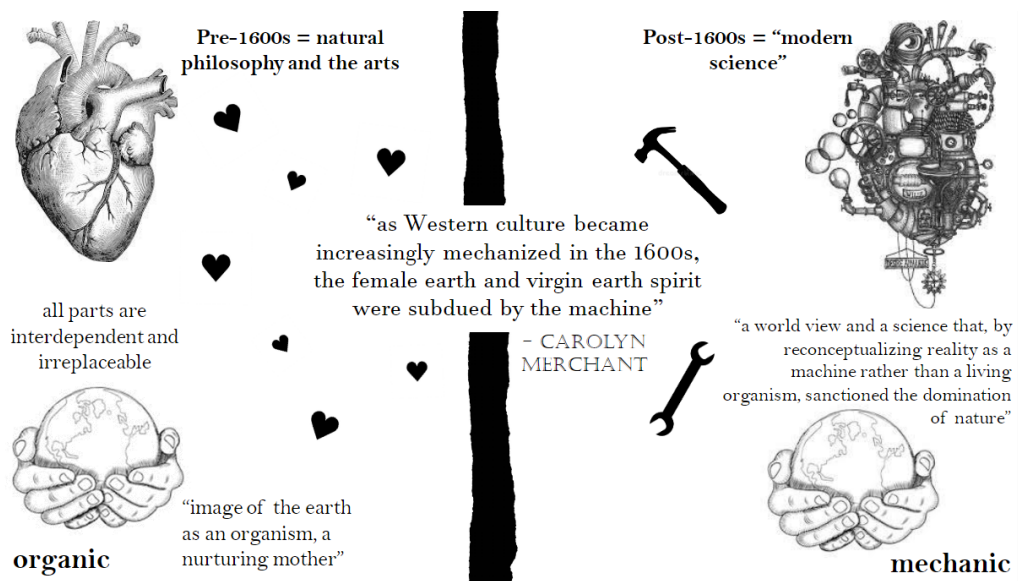
c)



**Caption written by the student:**

"Lynn White and Carolyn Merchant were both environmentalists during the emergence of modern environmentalism in the 1960s. Lynn White explored how the influence of Christianity (which is conventionally anthropocentric) has given humans an excuse to exploit the Earth---leading us to our current state. Carolyn Merchant, on the other hand, explores a gender bias. While in early times the Earth was seen as a powerful mother to be respected, as technology emerged, so did the idea that exploitation was morally acceptable."

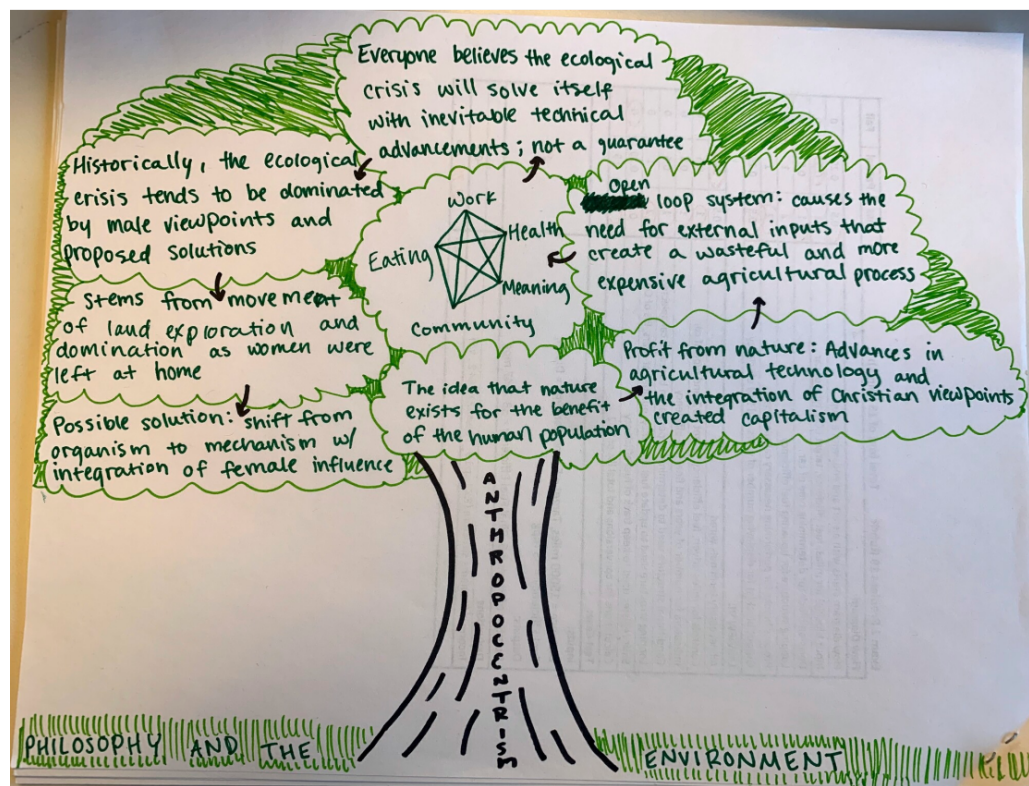
D)



### Caption written by the student:

"This concept map lays out the differences between a organic and mechanic view on our plant. On one side, the organic view shows a living, beating heart which represents our dependence on the earth and it's parts. This view was held by people before the 1600s, when "modern science" emerged, which is represented by the other side with a mechanical heart. In the center I included a very important quote from Carolyn Merchant's "Death of Nature" which encapsulated the entire idea this concept map conveys."

E)



Caption written by the student:

"My final concept map centered around anthropocentrism and its relation to multiple theories from the entire semester. The map starts by defining anthropocentrism first. It then transitions into the agricultural industry with the creation of capitalism and the negative effects of open-loop systems. The diagram shows the interconnection between work, health, meaning, eating, and community in the center because each anthropocentric topic can be applied to it. It then transfers into problems with possible solutions to the ecological crisis and an overview of the historically sexist solutions and ends with an explanation of a possible solution to the ecological crisis."